



A. Khalil
M.F. Carette

Mme B. âgée de 56 ans consulte pour une céphalée et un œdème du visage

Cathéter central posé il y a 1 an pour une chimiothérapie pour cancer du sein

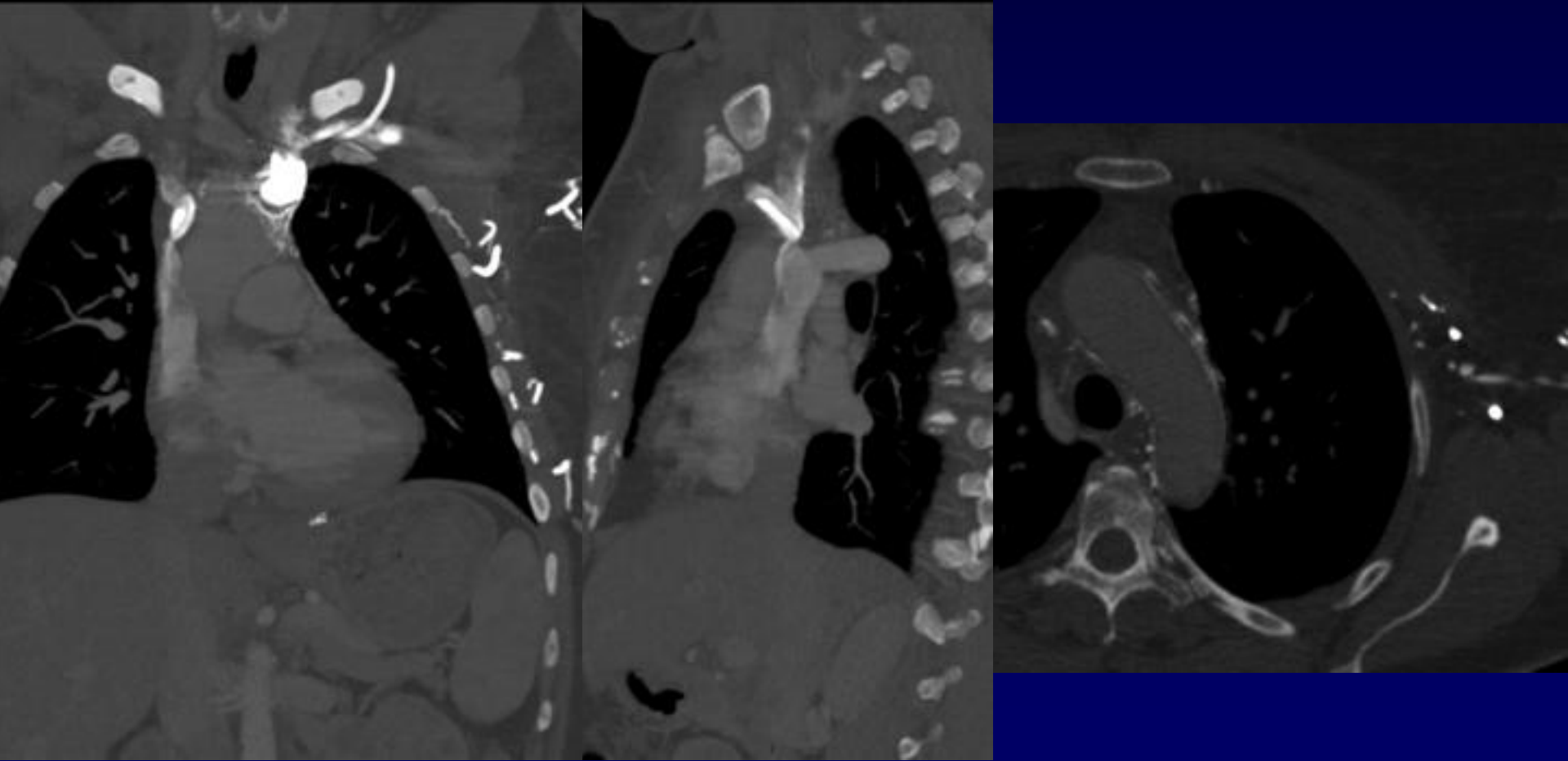




Diagnostic ?

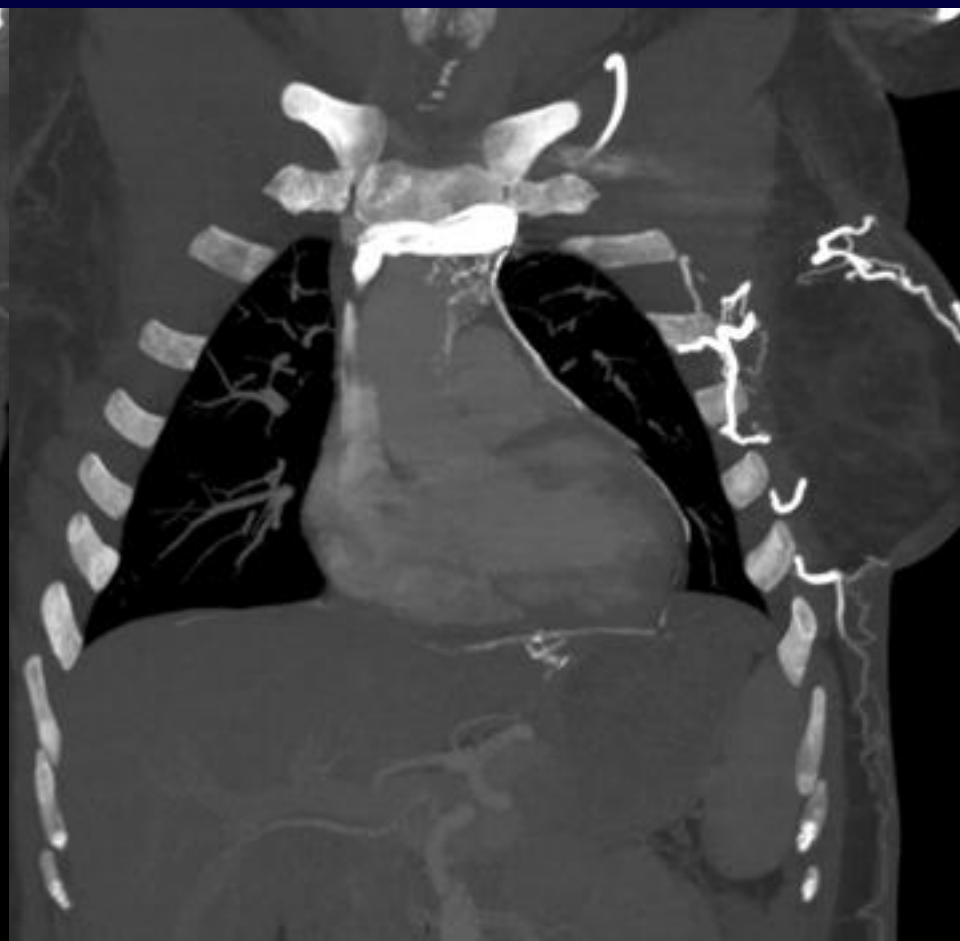


TDM thoracique





TDM thoracique

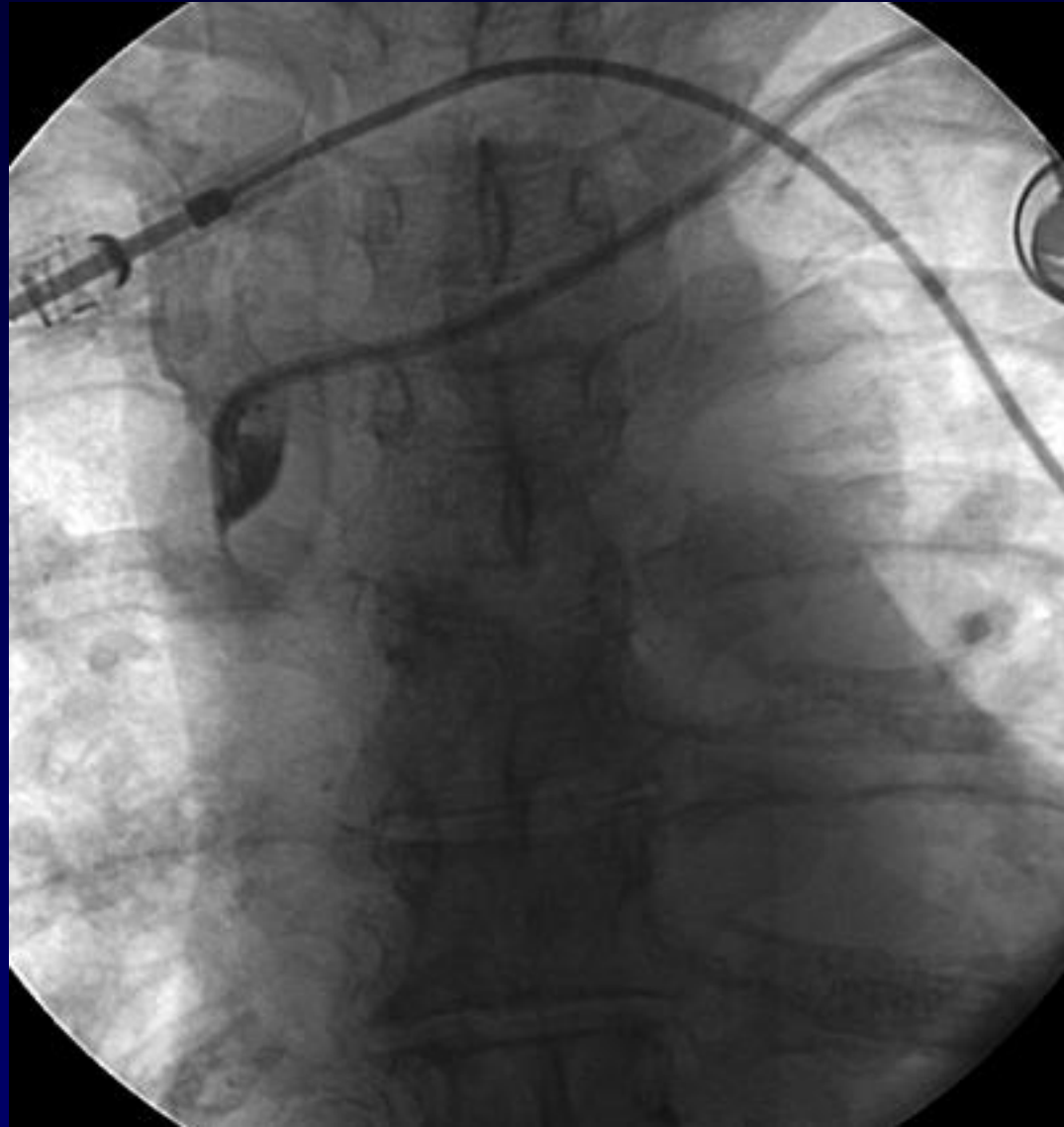




Syndrome cave supérieur sur un cathéter central



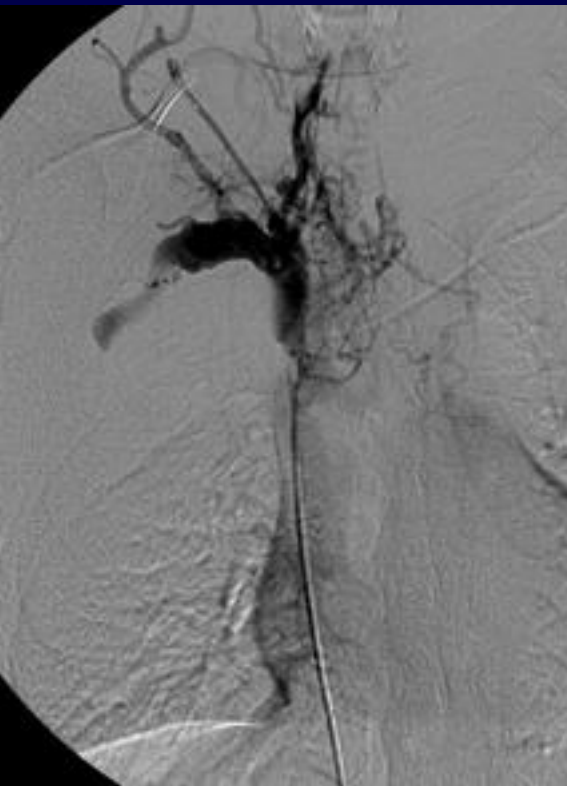
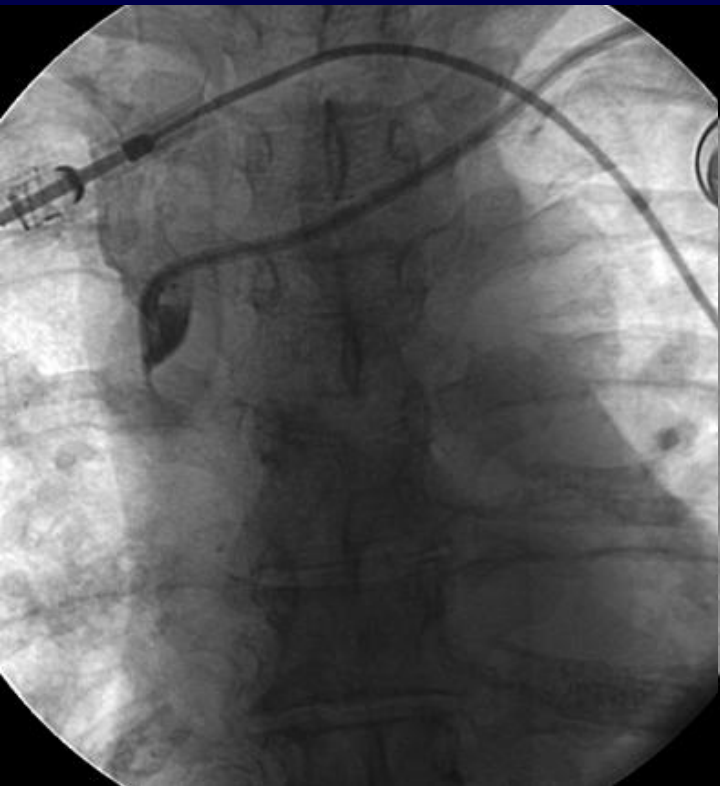
Sténose en diaphragme sur un cathéter court. Traitement?

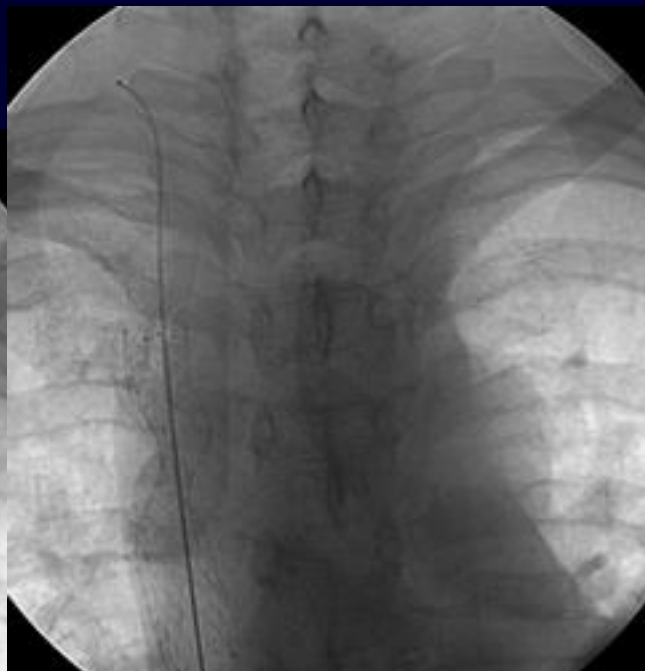




Sténose en diaphragme sur un cathéter court. Traitement?

Cathétériser la sténose avant le retrait du KT central





Prédilatation: ballon
10mm de diamètre

Prothèse: 6cm/14mm

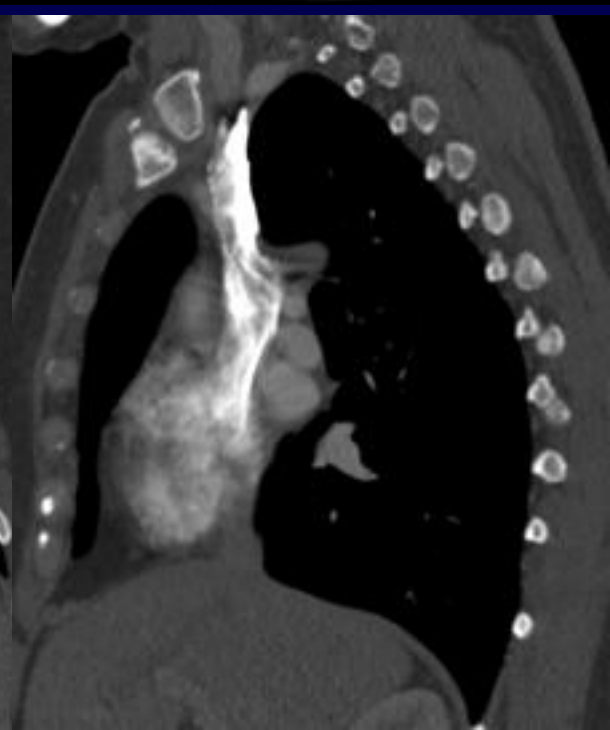
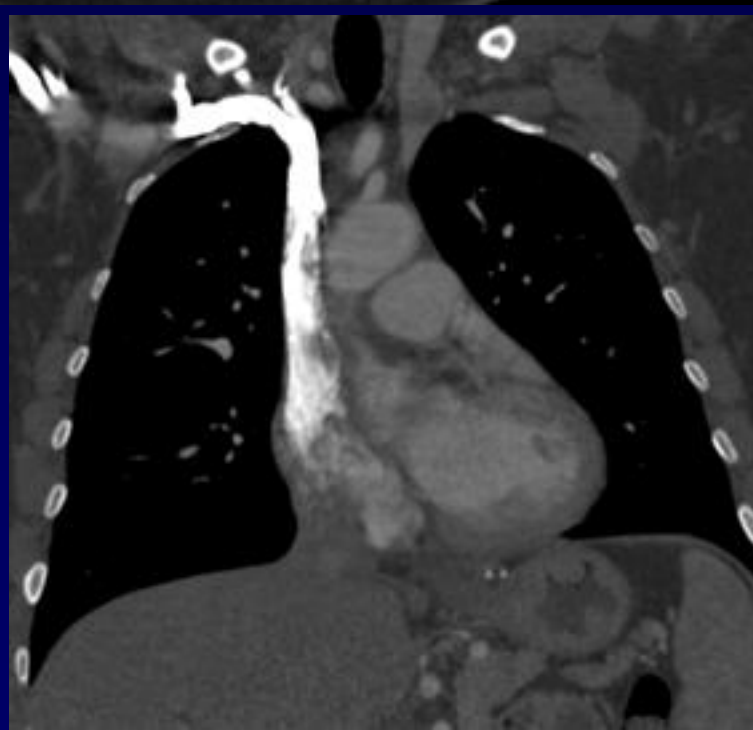
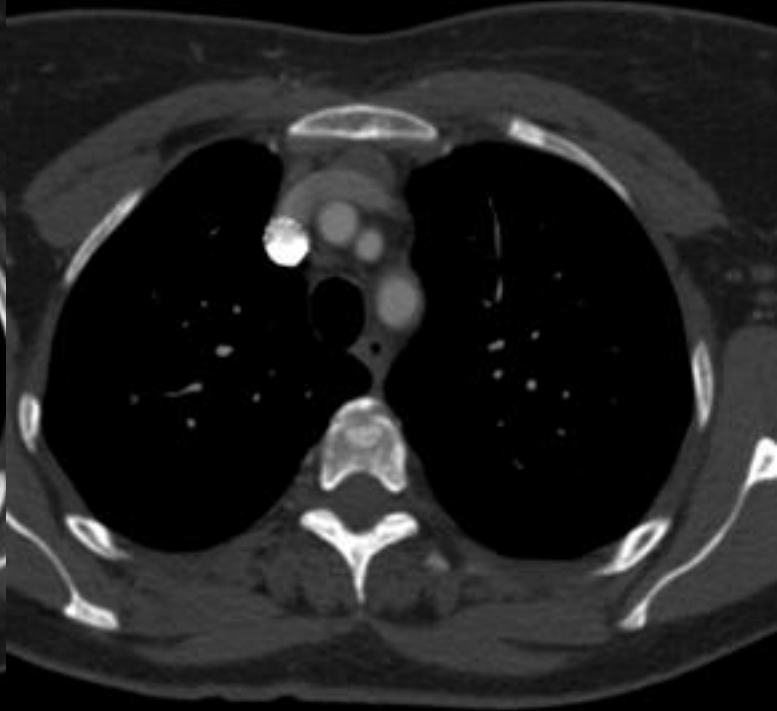
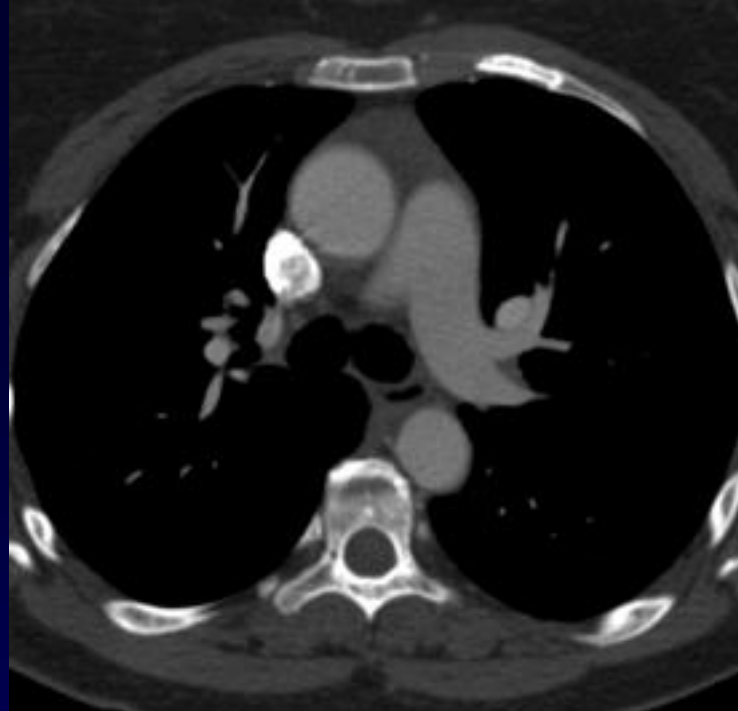




Avant



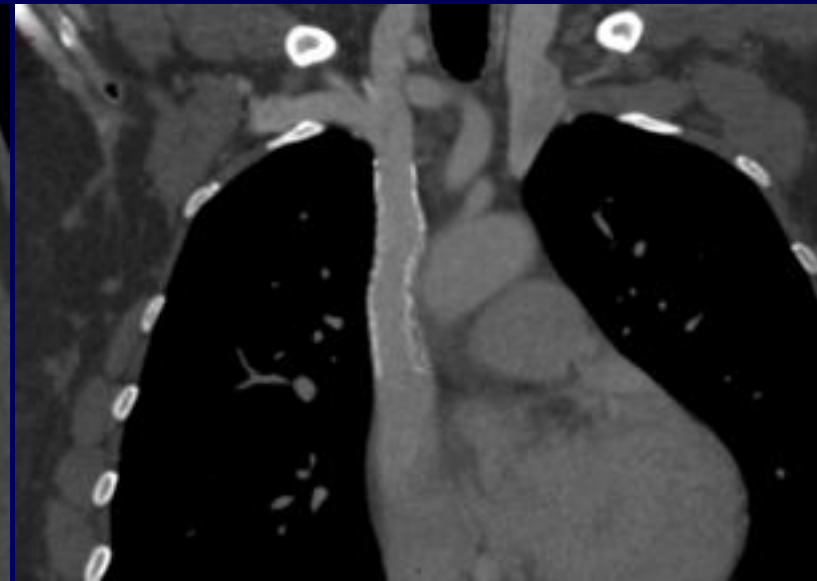
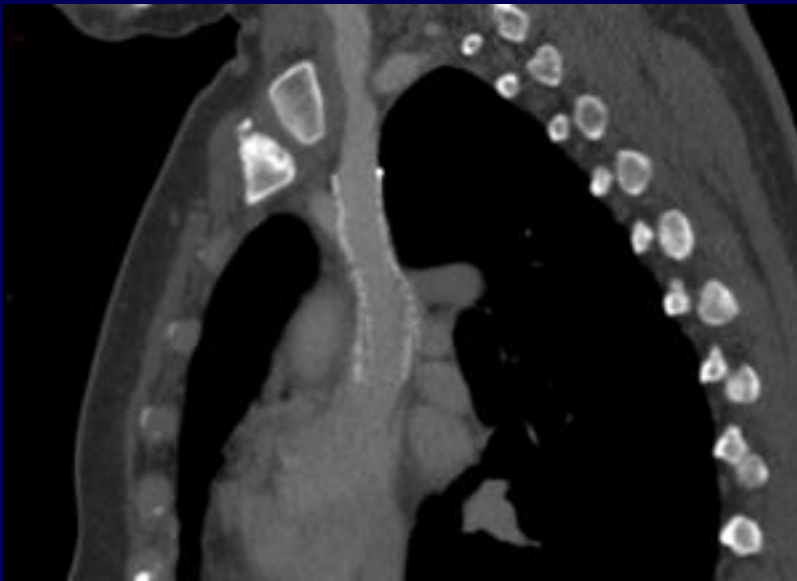
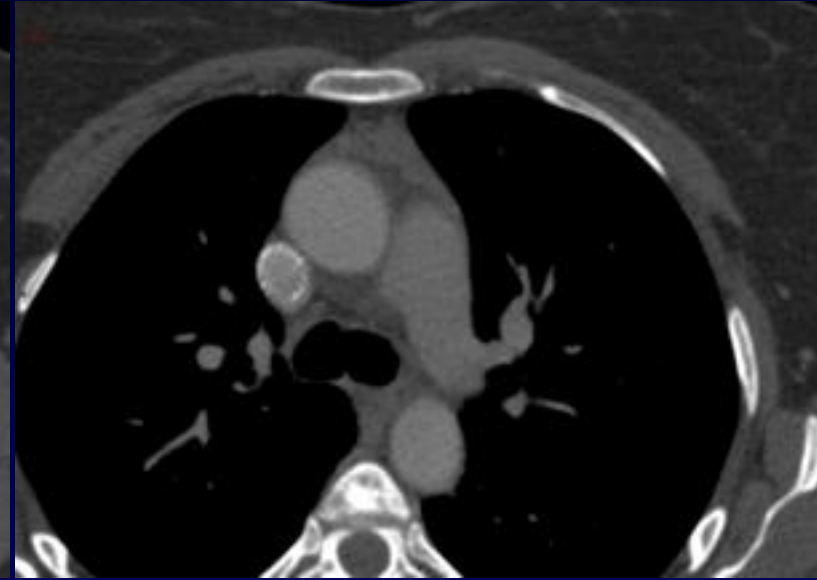
24H plus tard

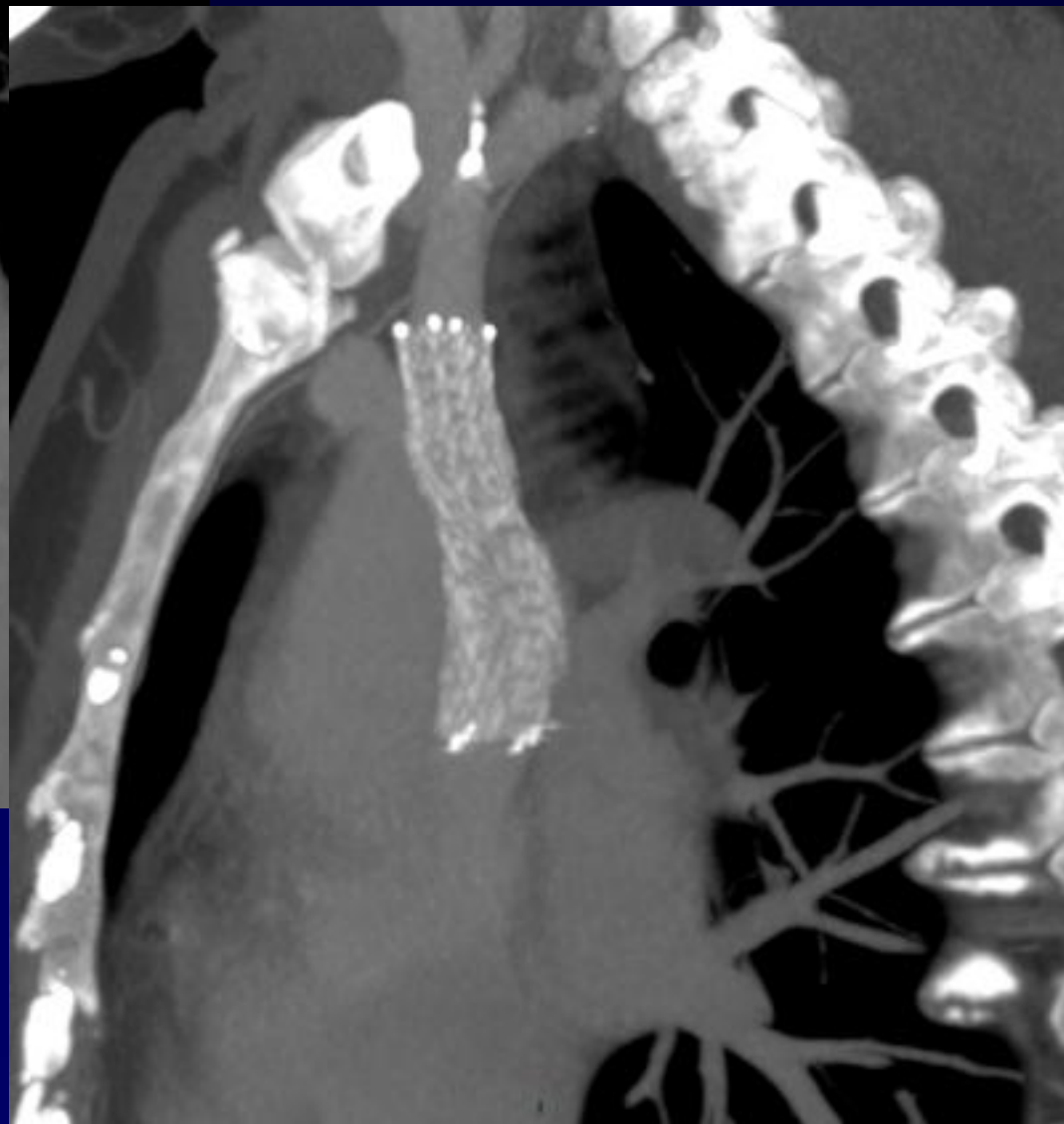
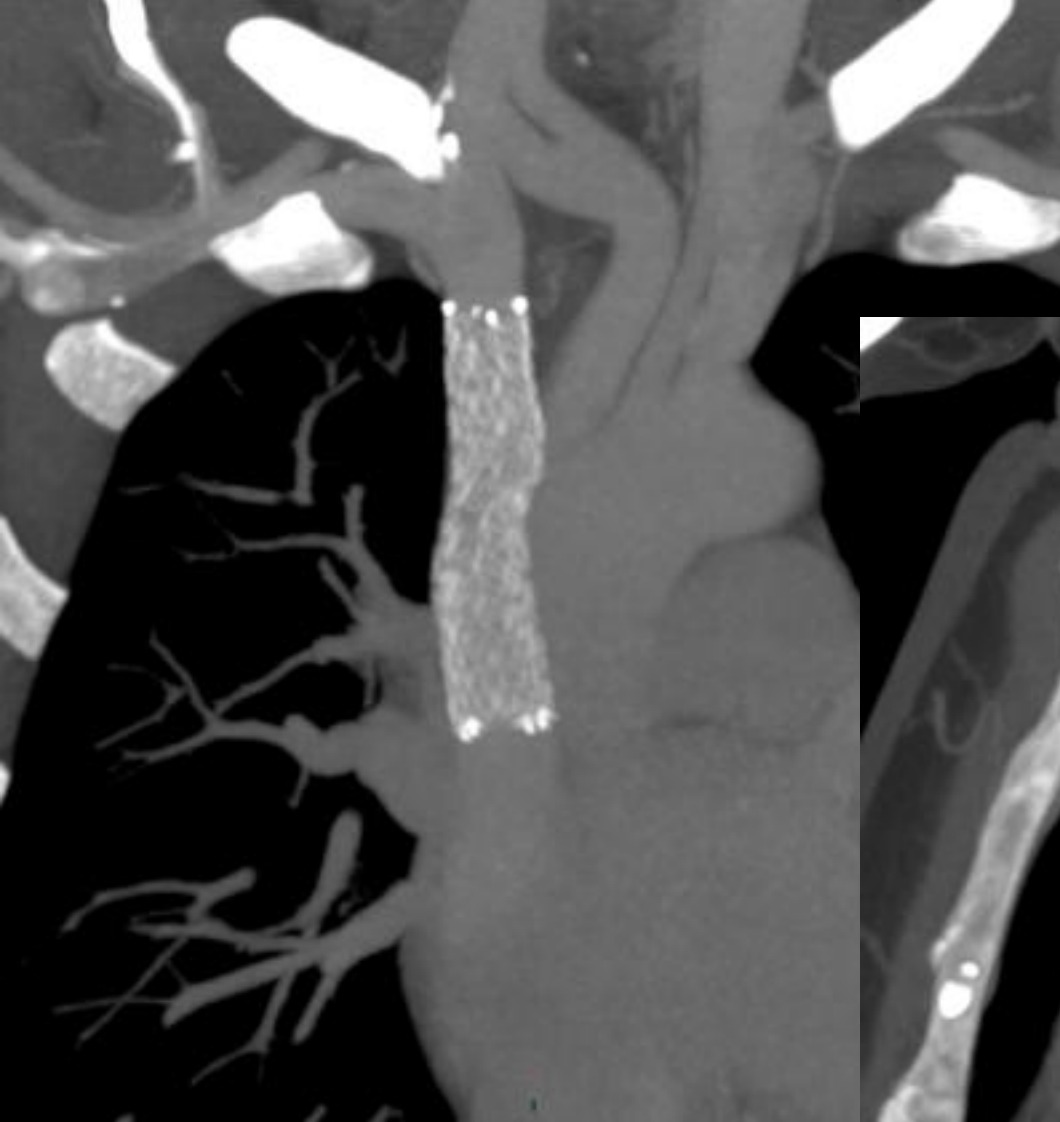


TDM 1 mois après



TDM 1 mois après







Avant



24H plus tard



1 mois plus tard